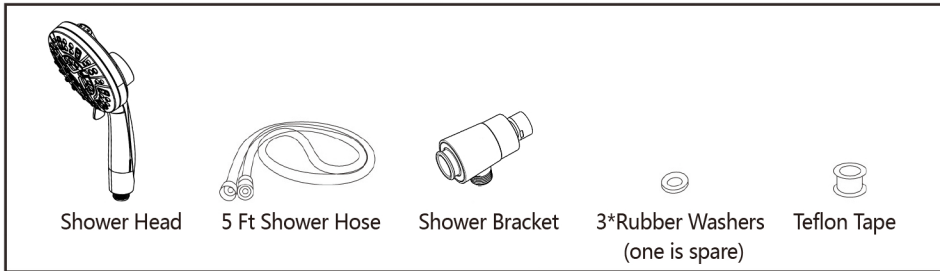
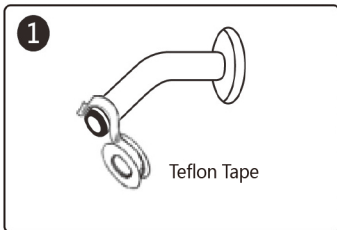


Handheld Shower Instructions

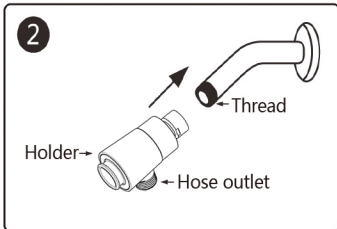


How to install



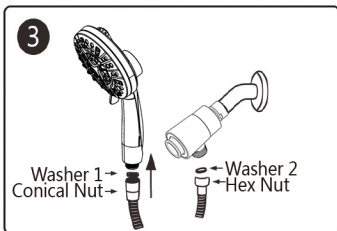
Step 1: Tape the threads of the shower arm

Unscrew your old shower head from the shower arm, then simply put 3-5 turns of Teflon Tape wrap around the shower arm threads.
(Note: Teflon Tape wrapped around the red plastic wheel, squeeze the red wheel out of the white plastic ring by hands.)



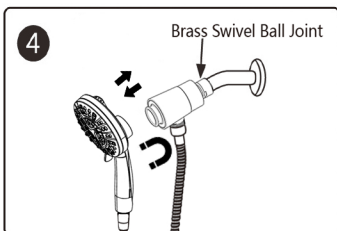
Step 2: Screw the bracket to the shower arm

Attach the bracket rotating clockwise onto the shower arm and hand tighten as tight as possible.
(Note: The white plastic o-ring on the bracket is open rather than completely closed. If you tighten with the wrench, place a piece of cloth over the pipe and turn just a slight turn. Over tightening may cause damage. This type of damage is not covered under warranty.)



Step 3: Connect the hose to the bracket and shower head

Put a washer into the hose **CONICAL NUT** and connect it to the shower head. Put another washer into the hose **HEX NUT** and connect it to the bracket.
(Note: Please don't reverse the joint between the two ends of the hose. Normally there might be some threads of the bracket exposed.)



Step 4: Installation Checkout

Ensure that all coupling nuts are tightened, hold the whole bracket by hand and rotate the ball joint to adjust the angle you need. Then turn on the main water supply and check for leakage.
(Note: If find any water leaks, please check that you followed steps 1-3 and that installation was completed per the instructions.)
When placing the shower head, just place the back magnet close to the head magnet of the bracket, and the two magnets will attract each other to fix the shower head on the bracket.

Community Q&A

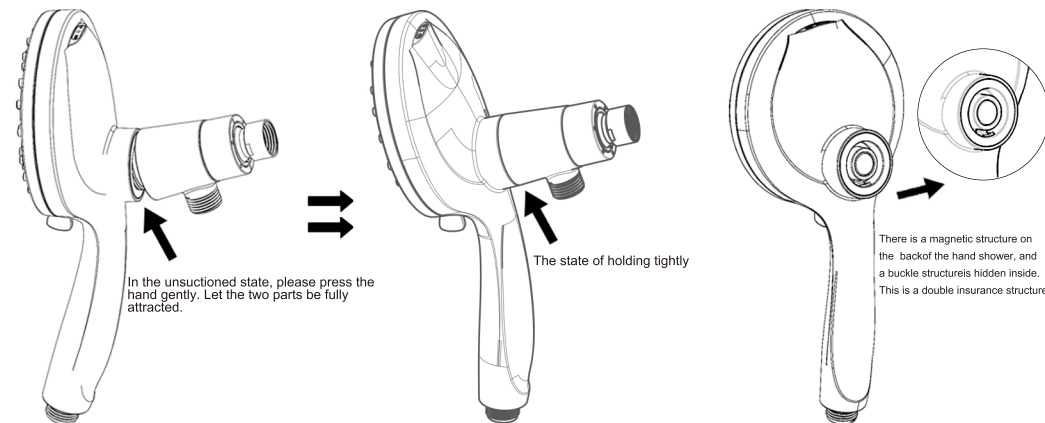
Q1: Why can't I adjust the angle when I hold the shower head?

A1: The shower head is held together by magnets and is not really linked together. Please hold the bracket to adjust the angle.

Q2: Why does handheld shower head fall easily?

Why does the hand shower make a noise when shaking it?

A2: There is a magnetic structure on the back of the handheld, which actually hides a buckle structure. It is a double insurance structure. It is normal for there to be noise when shaking the hand shower alone. Because the buckle structure requires space to lock the seat. When the handheld showerhead and the seat are attracted to each other, they may not be completely in place, so we need to gently press the handheld showerhead to completely tighten the magnetic suction part on the back of the handheld showerhead and the magnetic suction part of the seat without leaving any gaps. During this process, you may hear a click, which is the buckle holding the shower head. It also shows that the two components are closely connected together.



Q3: Why doesn't the pause mode shut off the water completely?

A3: Considering the internal pressure balance, the pause mode will not completely shut off the water. It keeps water temperature what you want. Easy to use and save water, which brings you more convenience.

Q4: Why does it leak?

A4: If you experience leakage an improper installation could have occurred. The solution is as below.

- If the hose is leaking, place the black washer into both ends of the hose to prevent leakage.
- If the shower arm is leaking, it could possibly due to the short threads on the shower arm. Place the spare washer on the mesh washer of the bracket nut to prevent water leakage.