

Bidet Spray Gun Set Installation Manual

W-303(ES)

Warranty Duration

All components of this faucet system are covered under a lifetime limited warranty, ensuring they are free from defects in material and workmanship for the original purchaser.

Repair and Replacement

If the product shows defects in material or workmanship under normal use and within the warranty period, we will, at our discretion, either repair the product or provide a replacement at no cost to the original purchaser. Please note that proof of purchase (e.g., an invoice) is required when requesting service. The warranty does not cover damages caused by improper installation, misuse, or modifications.

Exclusions


We shall not be responsible for the following cases:

- Damage to the product caused by improper installation, misuse, unauthorized repair or replacement, or abuse (including damage during shipment).
- Damage to the product caused by improper dismantling after installation.
- Damage resulting from abnormal water pressure or impurities in water pipes, which is not covered under this warranty.
- Rust on the product due to insufficient care and maintenance, which is not covered under this warranty.
- Damage caused by natural disasters such as fire, flood, earthquake, lightning storms, etc., which is not covered under this warranty.

I hope this helps! If you have any further questions or concerns, please let me know.

Having Trouble? Contact us.

 Email: info@faucetsupport.com

 Toll Free: 1-888-969-6880



M8605
SFS-1169

CONTENT

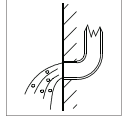
Bidet Spray Gun Set Installation Manual ----- (1-3)

CONTENIDO

Manual de Instalación del Juego de Pistola de Bidet ----- (4-6)

◆ Installation and Maintenance Instructions

1. Check the accessories list to verify that all parts are complete in this package.
2. Do not disassemble the main body by yourself.
3. Connect inlet pipes to supply valves.
4. Make sure inlet pipes and supply valves have no impurities and are cleaned, with no impurities in the pipeline.
5. After installation, check all joints for leakages.
6. Do not leave the bidet spray gun exposed to a severely corrosive environment.



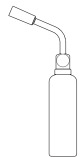
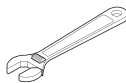
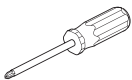
Do's

1. In order to keep the mixer surface bright, please clean the mixer regularly.
2. Rinse the faucet with clean water and wipe it with a soft cotton cloth.
3. Use one of the following cleaners to remove dirt from the surface:
 - a. Mild liquid cleaner.
 - b. Colorless glass cleaner and powder cleaner that do not cause abrasion and can be dissolved completely.
 - c. Polish liquid that does not cause abrasion.

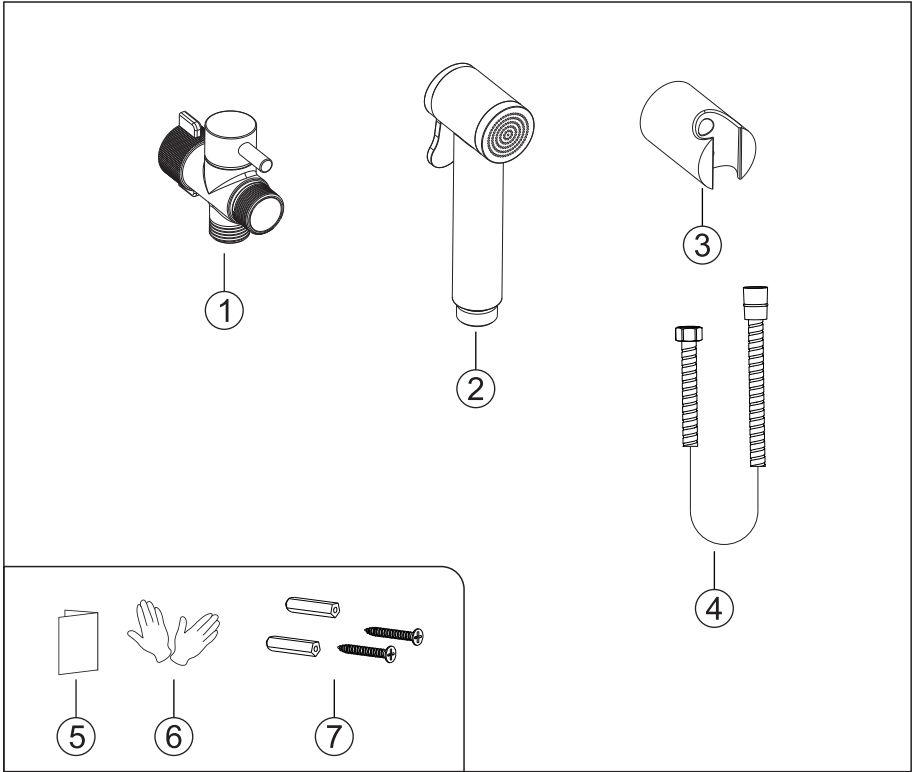
Don'ts

1. Avoid using cleaning powder, harsh cleaning chemicals, brushes and coarse cloth to prevent scratching and friction.
2. Do not use acid cleaners to clean the faucet as they may cause surface corrosion of the faucet. If the faucet is exposed to harmful acid substances, please rinse it immediately with water.

Tools Needed:

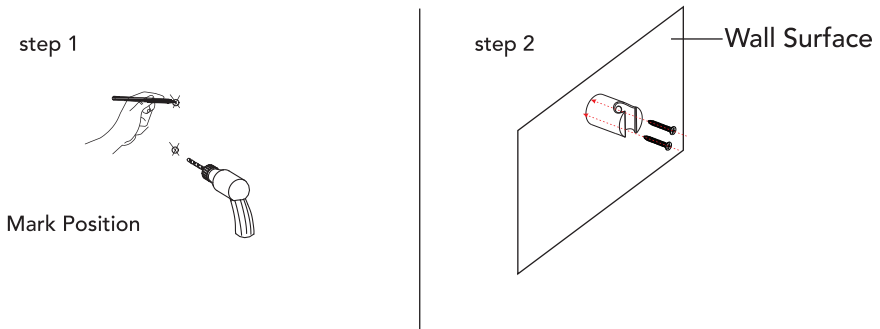


◆ Bidet Spray Gun Set
Accessories List



No.	Part name	Qty
1	Main body	1
2	Spray gun head	1
3	Shower holder	1
4	Shower hose	1
5	Instruction manual	1
6	Gloves	1 pair
7	Shower holder parts	1 set

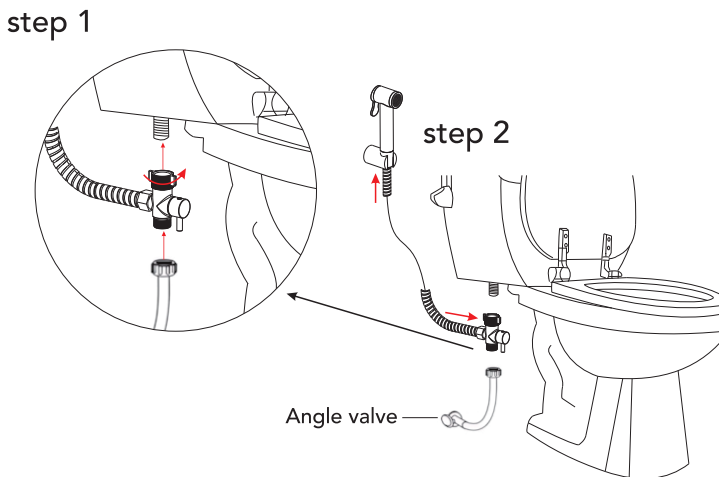
◆ Shower Holder Installation



Step 1: Mark the corresponding hole positions for the shower holder on the wall, then drill the holes using a drill bit and insert the expansion screws.

Step 2: Place the shower holder facing forward as shown in the diagram, align it with the pre-drilled screw holes, and tighten the screws using a screwdriver.

◆ Main Body and Spray Gun Installation



Step 1: Rotate the main body clockwise, as shown in the diagram, and screw it into the toilet tank male thread inlet. Make sure to tighten it securely to prevent leaks at the connection points.

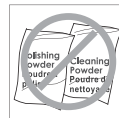
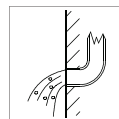
Step 2: As shown in the diagram, use the shower hose to connect the main body and the spray gun.

Step 3: Connect the angle valve and the main body using the inlet hose.

Step 4: After the connection is complete, turn on the handle switch to check for leaks at the connection points.

◆ Instalación y Cuestiones de Mantenimiento

1. Compruebe la lista de accesorios para verificar que todas las piezas están completas en este paquete.
2. No desmonte el cuerpo principal por su cuenta.
3. Conecte las tuberías de entrada a las válvulas de suministro.
4. Asegúrese de que las tuberías de entrada y las válvulas de suministro no tengan impurezas y estén limpias, y de que no haya impurezas en la tubería.
5. Después de la instalación, compruebe que todas las uniones no presenten fugas.
6. No deje el pistola de bidet expuesto a un entorno altamente corrosivo.



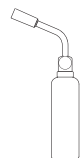
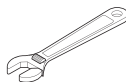
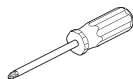
Qué Sí Hacer

1. Para mantener brillante la superficie del grifo, límpielo regularmente.
2. Enjuague el grifo con agua limpia y séquelo con un paño de algodón suave.
3. Utilice uno de los siguientes limpiadores para eliminar la suciedad de la superficie:
 - a. Limpiador líquido suave.
 - b. Limpiador de vidrio incoloro y limpiador en polvo que no causen abrasión y se disuelvan completamente.
 - c. Líquido de pulido que no cause abrasión.

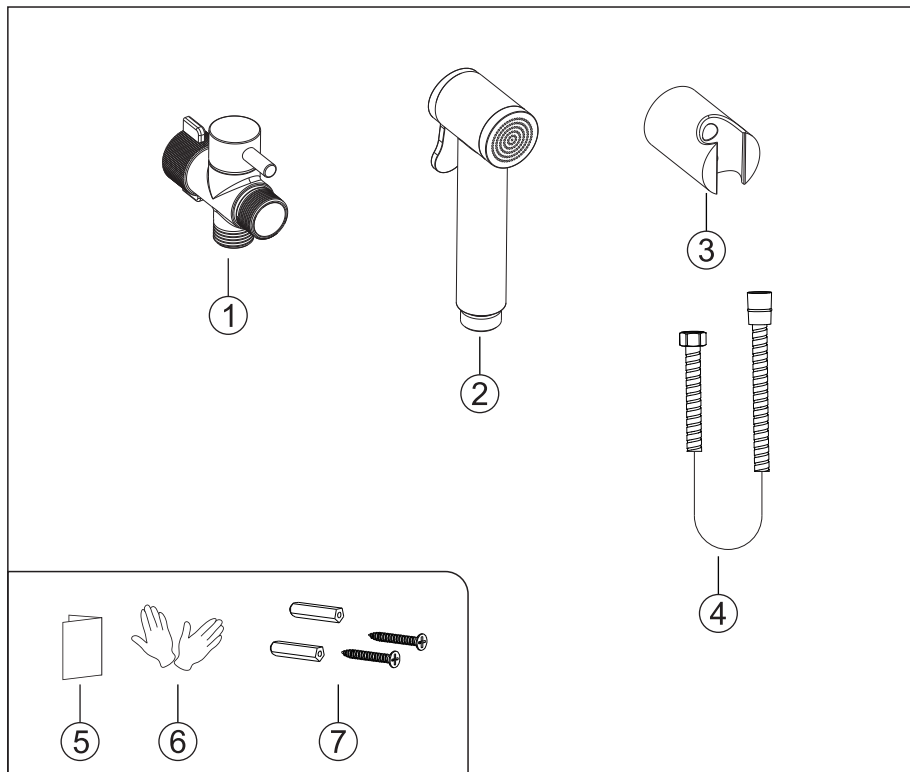
Qué No Hacer

1. Evite el uso de polvos de limpieza, productos químicos de limpieza agresivos, cepillos y trapos ásperos para evitar arañazos y rozaduras.
2. No utilice limpiadores ácidos para limpiar el grifo, ya que pueden causar corrosión en la superficie. Si el grifo entra en contacto con sustancias ácidas dañinas, enjuáguelo inmediatamente con agua.

Herramientas Necesarias:

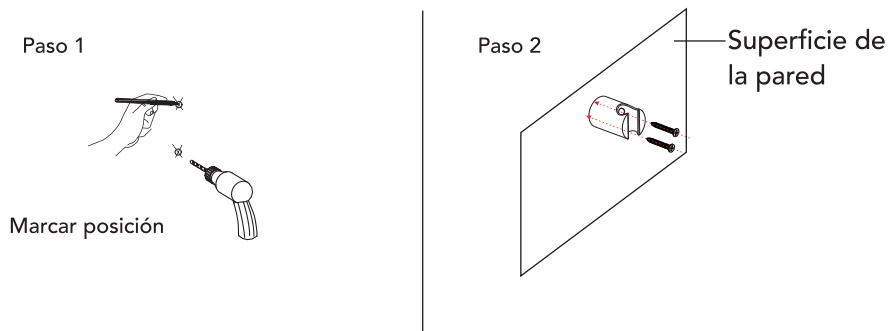


◆ **Juego de Pistola de Bidet**
Lista de Accesorios



N.º	Nombre de la pieza	Cant.
1	Cuerpo principal	1
2	Cabezal de la pistola rociadora	1
3	Soporte de ducha	1
4	Manguera de ducha	1
5	Manual de instrucciones	1
6	Guantes	1 par
7	Partes del soporte de ducha	1 juego

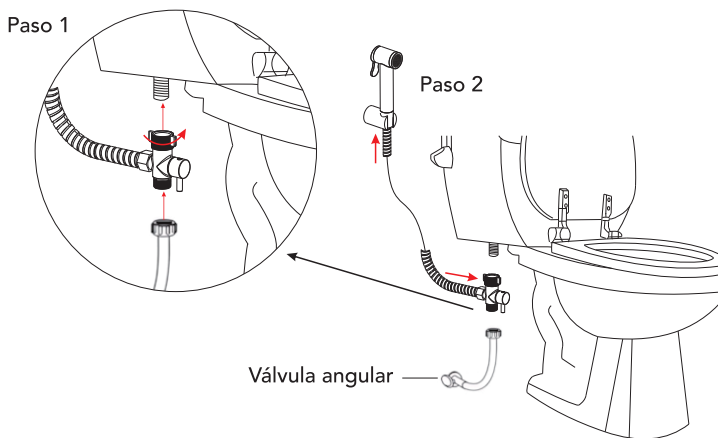
◆ Instalación del Soporte de Ducha



Paso 1: Marque las posiciones correspondientes de los orificios para el soporte de ducha en la pared, luego taladre los orificios utilizando una broca y inserte los tornillos de expansión.

Paso 2: Coloque el soporte de ducha mirando hacia adelante como se muestra en el diagrama, alínelo con los orificios previamente perforados y apriete los tornillos utilizando un destornillador.

◆ Instalación del Cuerpo Principal y la Pistola de Rociado



Paso 1: Gire el cuerpo principal en sentido horario, como se muestra en el diagrama, y atorníllelo en la entrada de rosca macho del tanque del inodoro. Asegúrese de apretarlo firmemente para evitar fugas en los puntos de conexión.

Paso 2: Como se muestra en el diagrama, utilice la manguera de ducha para conectar el cuerpo principal con la pistola rociadora.

Paso 3: Conecte la válvula angular con el cuerpo principal utilizando la manguera de entrada.

Paso 4: Una vez finalizada la conexión, abra el interruptor de la manija para verificar si hay fugas en los puntos de conexión.